



Alder Grove
Church of England Primary School

Reception – Meet the Teacher

13.09.22



Kindness



Service



Truthfulness



Forgiveness



Courage



Perseverance

‘They are like trees planted along the riverbank, bearing fruit each season’ Psalm 1:3

Who works in Wagtail class?



Miss Cresswell
Class Teacher
Every day



Mrs Loosley
Teaching Assistant
Mon- Thurs



Miss Walker
Learning Support Assistant
Mon- Weds



Mrs Magliulo
Learning Support Assistant
Thus-Fri



Miss Rane
Learning Support Assistant
Mon- Thurs pm



Miss Kirby
Cover Teacher
Tuesday pm



Mrs Sudlow
Cover Teacher
Tuesday pm

'They are like trees planted along the riverbank, bearing fruit each season.' Psalm 1:3



Who works in Robin class?



Miss Tuckey
Class Teacher
Every day



Miss Hayward
Teaching Assistant
Every day



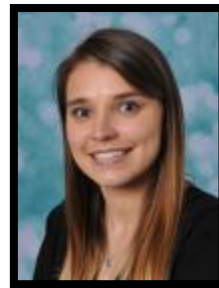
Miss Neblett
Learning Support Assistant
Thurs-Fri



Mrs Sheikh
Learning Support Assistant
Mon-Wed



Miss Rane
Learning Support Assistant
Mon- Thurs pm



Miss Kirby
Cover Teacher
Tuesday pm



Mrs Sudlow
Cover Teacher
Tuesday pm

'They are like trees planted along the riverbank, bearing fruit each season.' Psalm 1:3

Typical day




	Monday	Tuesday	Wednesday	Thursday	Friday
8.45-8.55	Arrival and registration	Arrival and registration	Arrival and registration	Arrival and registration	Arrival and registration
9.00	Whole School worship	Morning Task Hear readers	Class worship	Morning Task Hear readers	Celebration Assembly
9.20	Phonics	Phonics	Phonics	Phonics	Phonics
9.50	Explore time/ Maths/ Literacy				
10.15	SNACK				
10.30	Talk through stories	Talk through stories	Talk through stories	Talk through stories	Talk through stories
11.00-12.00	Explore time/ Maths/ Literacy				
11.45-13.00	LUNCH				
13.00-13.10	Class teddy news	Finger gym	Mindfulness	Finger gym	Mindfulness
13.15	Explore time	Music/ PE	Explore time	Explore time	Library
15.00-15.15	Story and get ready to go home	Story and get ready to go home	Story and get ready to go home	Story and get ready to go home	Story and get ready to go home

'They are like trees planted along the riverbank, bearing fruit each season.' Psalm 1:3

Behaviour and expectations


- Resetting expectations
- Teaching behaviour
- Praising
- Modelling expectations





The Alder Grove Key Code

- We always work hard and try our best
- We are kind and helpful to everyone
- We show respect to others and ourselves
- We are honest and ready to forgive
- We respect our school environment
- We encourage one another



- Reminder for expectations
- Watching other children
- Completing 'Reflection time'

They are like trees planted along the riverbank, bearing fruit each season.' Psalm 1:3

Microsoft Sway

- Each week you will be able to access a Microsoft Sway which will show you what we've been learning in school.
- This is an online presentation tool (same as our weekly newsletter) for you to see photographs of work and other activities in your child's class has been doing that week.
- It will be updated weekly.
- Only parents from this class will have access.
- **First Sway will be accessible on 23rd September.**



Celebrating Success

- Each week two children from the class are presented the Alder Grove Excellence Award at the Friday Celebration Collective Worship. Parents/carers are told in advance and welcome to attend.
- Reception children will join in these celebration assemblies from **w/c 31/10/22**
- Please send in your child's achievements from outside of school. We will celebrate these in school, display these on our whole school 'Celebrating Success' display and can also be presented to your child in the Friday Alder Excellence Away Collective Worship.



'They are like trees planted along the riverbank, bearing fruit each season.' Psalm 1:3

Maths

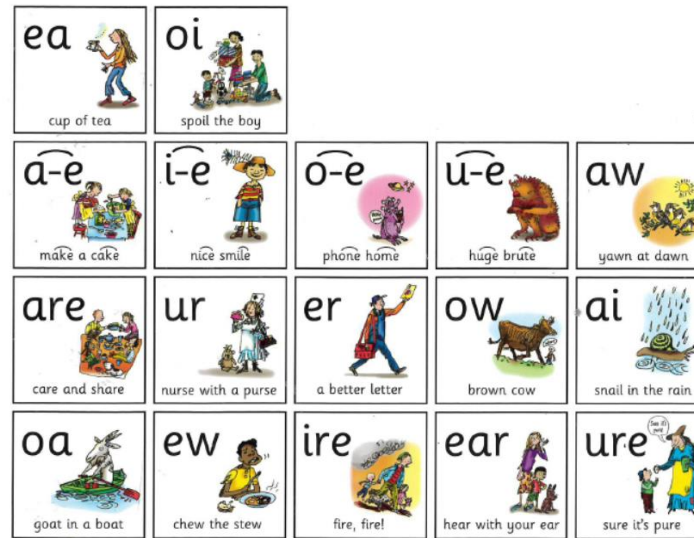


- Recognise, order and count numbers to 20
- Find one more and one less of any number to 10
- Recognise and name 2D and 3D shapes
- Predict and make what comes next in 2 and 3 step patterns
- Read addition and subtraction sentences
- Order objects by length and height
- Recall number bonds to 10
- Know the difference between odd and even numbers
- Doubling and halving numbers

'They are like trees planted along the riverbank, bearing fruit each season.' Psalm
1:3

Phonics, Reading & Writing

- Work up to 1 hour over the year in Reception
- Book bag books changed either once or twice a week, depending on their age and group
- The sounds your child is focusing on will be signposted in their book bag book
- Fred talk and Fred in your head
- Red words
- Expression
- Comprehension
- Weekly videos emailed
- Library- sharing books



'They are like trees planted along the riverbank, bearing fruit each season.' Psalm 1:3

Wider Curriculum



- All about me
- People who help us
- Dinosaurs
- Weather
- Garden
- Amazing animals

Our topics will be enriched by activities such as school trips, cooking, sporting workshops, special visitors etc.

'They are like trees planted along the riverbank, bearing fruit each season.' Psalm 1:3



Home Learning



- Please read 5 times per week and record this in the reading record
- Practise letter formation
- Maths – e.g. Practise writing numbers using rhymes, number bonds, counting forwards and backwards to 10, 20 and beyond, more than and less than and repeating patterns

'They are like trees planted along the riverbank, bearing fruit each season.' Psalm 1:3

Other Information



- Attendance
- Milk - Costs approximately £14 per term once your child turns 5 -Please contact the office for more information
- Lunch - your child will receive a free hot lunch every day
- **PE Day is Tuesday** – please wear PE kit to school

PE KIT

- Navy blue shorts
- School polo shirt
- Navy blue tracksuit trousers/leggings
- School jumper/cardigan
- Trainers
- Black ankle socks

'They are like trees planted along the riverbank, bearing fruit each season.' Psalm 1:3



Other Information



SUMMER UNIFORM

- Black knee-length shorts
- Black ankle socks
- Summer dress (pale purple and white gingham dress)
- White ankle socks with summer dress
- Plain white shirt (no polo shirts)
- School tie* (elasticated ties available for EYFS/KS1)
- Black school shoes (no ballet pump style shoes)
- Jumper/cardigan with school logo
- Hair accessories should be navy or black: long hair tied back. No oversized hair accessories.

WINTER UNIFORM

- Black trousers
- Black skirt
- Black pinafore dress
- Black socks/tights
- Plain white shirt (no polo shirts)
- School tie* (elasticated ties available for EYFS/KS1)
- Black school shoes (no ballet pump style shoes)
- Jumper/cardigan with school logo
- Hair accessories should be navy or black: long hair tied back. No oversized hair accessories.

- Label uniform
- Umbrellas are not needed in school

'They are like trees planted along the riverbank, bearing fruit each season.' Psalm 1:3





Thank you for coming!

Any questions?

'They are like trees planted along the riverbank, bearing fruit each season.' Psalm
1:3